

How to Use PredictMate ®

A) Add initial predictive measurements as equipment readings. There are three ways to add readings:

- Manual entry in the Equipment Readings window.
- Enter to handheld (PDA). You can enter new readings to handheld before any scheduling. See [Export to Handheld and Update from Handheld](#)
- Import from SCADA. See [Staging Tables and Scheduling](#) or import from a Machine Condition Evaluation (MCE).

B) Set PredictMate Alarm Limits. PredictMate will report alarm limits by **one** of the following four methods for each equipment unit, depending on how much information you enter.

- 1) Let PredictMate set limits from past data. At least six past data points are required.
- 2) By the type of reading where no other limit exists for the equipment. **NOTE:** You can enter many records of one type for many applications. For example “TEMP001, TEMP002”, ...” where temperature limits are different for different equipment.

Scope	Type	Description	Maximum	Minimum	Calc Limits
	A	Amperage			<input checked="" type="checkbox"/>
<input checked="" type="checkbox"/>	D	Displacement Vibration	2.5000	0.0000	<input checked="" type="checkbox"/>
	TEMP	Temperature (°C)	50.0000	30.0000	<input type="checkbox"/>
	TEMP 002	Temperature (°C) 45 Max	45.0000	30.0000	<input type="checkbox"/>
	V	Velocity Vibration	0.6000		<input checked="" type="checkbox"/>

- 3) By a group of equipment, related by components where no specific limit exists.
- 4) Setting the specific limit for each equipment reading.

Scope	Out	Location	Route	Unit Code	Unit Description
	<input type="checkbox"/>	00099000		00099000	Equipment 00099000
	<input type="checkbox"/>	00100000		00100000	Equipment 00100000
	<input type="checkbox"/>	F01	2302	BLW01	AIR WASH BLOWER
	<input type="checkbox"/>	F01			
	<input type="checkbox"/>	G01			
	<input type="checkbox"/>	M01			

Equipment Limits for Unit BLW01						
Reading Type	Position	Entered Limit	None	Change	Maximum	Minimum
CFM Cubic ...		1300.00	<input type="checkbox"/>	<input type="checkbox"/>	0.00	1300.00
TEMP Temp...		105.00	<input type="checkbox"/>	<input checked="" type="checkbox"/>	104.02	0.00


C) Continue adding readings when scheduled by PredictMate. Readings from SCADA are excluded from scheduling by PredictMate unless you select otherwise when prompted. Scheduled readings output to either handheld (PDA) or printout.

Scheduled Readings to Handheld

Getting readings with a handheld is simple compared to printouts.

- 1) If needed, select equipment by tagging equipment records in the “Scope” column. Sort equipment as

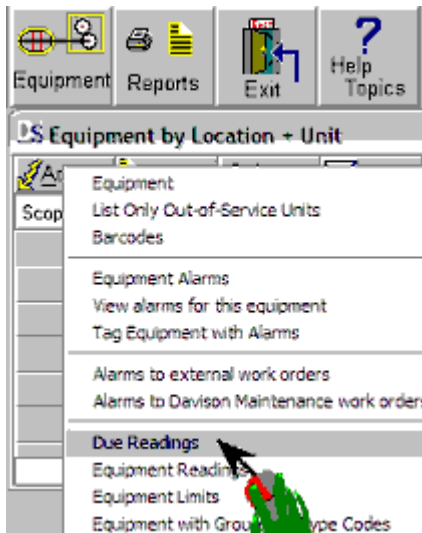
you want records sorted on the handheld.

- 2) Press the handheld  button. Then select "Export to Handheld". Then HotSync to the handheld.
- 3) After getting readings with the handheld, HotSync, then select "Update from Handheld".

Scheduled Readings to Printouts

Run the Due Readings report to get a list of readings. Use this list as you move among equipment. You should print the list in a sort order that allows the most convenient route through the equipment.

- 1) Sort by Location (or other sort of your choice).
- 2) Select the "Due Readings" report.



Print the Due Readings report, then take readings at the equipment.

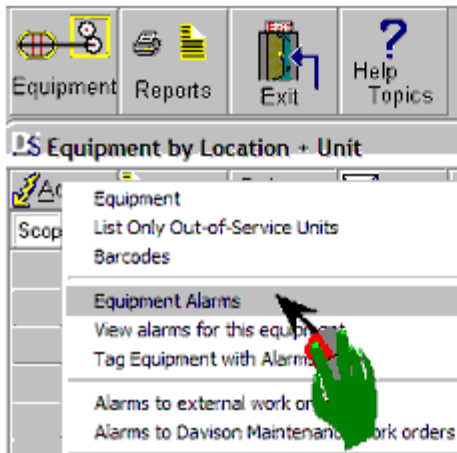
Equipment Readings Due on 12/21/2005 Default interval 28 Days
Sorted by Location + Unit

Unit	Location	F01	Filter Building	Route
	BLW01			2302
	AIR WASH BLOWER (BACKWASH BLOWER)			
	Position	Type	Last reading by (No Personnel ID)	11/18/2005
			New reading by	././
		Cubic Feet per Minute air flow (Minimum)	1150.00	_____
		Temperature	99.50	_____
		Hours, Total	5500.00	_____
	2H	Displacement Vibration	5.10	_____
	2H	Velocity Vibration	0.44	_____

After measuring readings and writing them in the blanks, enter the new readings to PredictMate.

See [How to Enter Data](#).

- D) After adding new readings, run the alarm report.
- 1) Select a sort order and tag equipment records if needed
 - 2) Select the "Equipment Alarms" report.



- E) Review alarms for indication of trouble.

Equipment Alarms						
Sorted by Location + Unit						
Unit	Location	Filter Building				Route
	F01					2302
BLW01	AIR WASH BLOWER (BACKWASH BLOWER)					
Date	Time	Person	Position	Type	Maximum	Minimum Reading
11/16/2005		(No Personnel ID)		Cubic Feet per Minute air flow (Minimum)		1300.00 1150.00
				Temperature	104.02	99.50
			2H	Displacement Vibration	5.00	5.10
			2H	Velocity Vibration	0.35	0.44

- F) You can transfer alarms to work orders in Davison CMMS. [See How to Create Work Orders from Alarms](#)
- You can export alarms to work orders for another CMMS. See [How to Create External Work Orders](#). Custom options are available to create Predictive work orders in another CMMS.