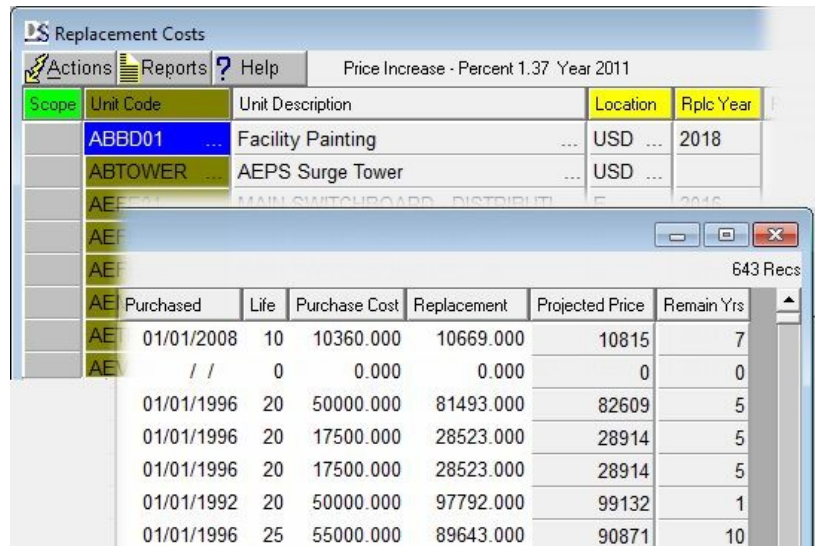
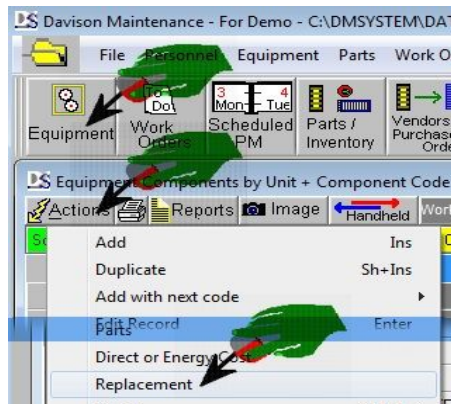


## Replacement Costs

This report accumulates current or projected cost for annual replacement of equipment. The data browser allows data entry with interactive calculation of remaining years, replacement year, and projected price.

Purchased	Useful Life	Remaining	Replacement	Purchased	Fiscal Year Ending 2011			
					Years	Years	Year	Cost
							1.37 % Price Increase	
ABBD01	Facility Painting	1/1/2008	10	7	2018	\$10,360	\$10,669	\$10,815
AEFE01	MAIN SWITCHBOARD - DISTRIBUTION	1/1/1996	20	5	2016	\$50,000	\$81,493	\$82,609
AEFE04A	MAIN SWITCHBOARD NO. 4A	1/1/1996	20	5	2016	\$17,500	\$28,523	\$28,914
AEFE04B	MAIN SWITCHBOARD NO. 4B	1/1/1996	20	5	2016	\$17,500	\$28,523	\$28,914
AEMC01	EFFLUENT MOTOR CONTROL	1/1/1992	20	1	2012	\$50,000	\$97,792	\$99,132
AETR01	SUBSTATION & TRANSFORMER	1/1/1996	25	10	2021	\$55,000	\$89,643	\$90,871



**IMPORTANT TIP:** To sort by Replacement Year, click on the Replace Year header.

This can provide data for an additional report, the Replacement Fund Schedule, which is specific to a facility. It compares replacement cost with available funds.

To obtain a Replacement Fund Schedule:

- ⤴ Ask for a special report from Davison Systems, or:
- ⤴ Export data from the Replacement Costs report for inclusion in the schedule.

You are prompted for Price Increase and Year:

- ⤴ Price Increase, percent - The projected increase in Replacement Price.

You can leave this blank if you prefer to use Replacement Price without a projection. If a Price Increase is entered, it is added to the Current Replacement Price for Projected Replacement Price.

- ⤴ Year - End of fiscal year, usually the current year.