



Davison CMMS

Manage work by personnel on facility assets.
Perform maintenance reporting and analysis.
Reduce maintenance costs and down time.
Related with predictive maintenance (PdM).

Lean software, focused on deployment.
Complete, context-sensitive help documentation.

Equipment Information

Designed for flexible startup with incomplete data.
Reliability Centered Maintenance (RCM) by priority.

Work Orders

Choice of views according to user requirements.
Work Requests from a simple window or email.
Built-in Gantt chart for planning.

Preventive Maintenance (PM)

Easy scheduling by one Month/Day.
Many scheduling options.
Select a simple or detailed routine.

Inventory (Parts)

Analyze parts availability for work orders.
Summarize parts needed to a report or email.

Management Reports

Work Summary: Reports personnel time, overdue PM.

Personnel Productivity: Percent accounted time.

Out of Service: Time equipment was out and the work order costs for down time.

Equipment Costs: Compare purchase, maintenance, and energy costs. Custom comparisons are available for calculations of depreciation, power usage, other.

Engineering Support

We work in projects that include machine condition evaluation, energy audits, and other engineering study.

“Davison Software has always provided timely and personal support as necessary. I would purchase this product again.”

Karl Royer, O&M Manager
East Bay Dischargers Authority
San Lorenzo, California

“Davison Software has accommodated our needs and provides our initial data and custom reports in a CMMS specific to our clients.”

Kevin Brown, Columbia Machine, Inc.
Vancouver, Washington

PredictMate®

Manage Data Collection
Improve Reliability

PredictMate warns you of impending equipment failure, comparing data to alarm limits or forecasted trends.

Consolidate predictive data from various sources to one desktop program for simple analysis and action.

Start by simply adding data.

Set alarm limits, or let PredictMate set limits.

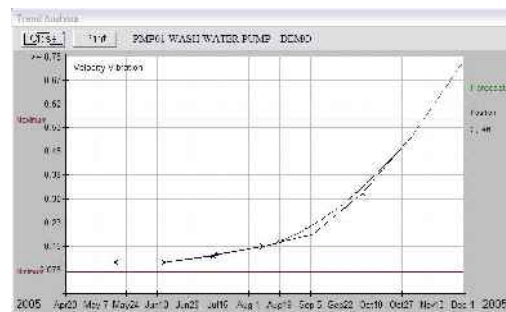
Add or import almost any type of reading, like vibration, amperage, cycles, temperature, or runtime.

PredictMate with CMMS

Condition-Directed preventive maintenance is scheduled according to alarm limits.

Alarms in PredictMate are transferred to work orders in the CMMS for corrective action.

Analyze alarms, trends, and forecasted alarms with graphs that are easy to configure.



About the Developer

Paul Davison started hands-on in maintenance management as a certified operator and plant manager for water treatment. He worked for engineering and contract operations firms as a technician, operations coordinator, and trainer. He has several years of full-time experience in programming for a corporation with enterprise databases.

He has supported and developed computerized maintenance management systems (CMMS) since 1986. Davison Software was established in 1991.

Paul combined plant management experience and programming skill to develop the Davison Maintenance CMMS and PredictMate®. He continues to apply this combination of skills for engineering support and CMMS deployment.